



# STOPPIT & STOPPIT-M NEWSLETTER



July 2024

## WELCOME ALL...

We had  new recruits in **June 2024** bringing our current total number of recruits to

# 77!



A fantastic month for recruitment and an **extra big thank you** to all of the recruiting teams:

Royal Infirmary of Edinburgh, NHS Lothian

**Pinderfields Hospital, The Mid Yorkshire Trust**

Royal Devon & Exeter Hospital, Royal Devon University Healthcare NHS FT

 **University College London Hospitals, NHS Foundation Trust** 

The James Cook University Hospital, South Tees NHS Foundation Trust

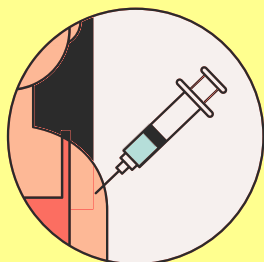
**Ninewells Hospital, Dundee, NHS Tayside**

Bradford Teaching Hospitals NHS Foundation Trust, Bradford Royal Infirmary

**Sunderland Royal Hospital, South Tyneside & Sunderland NHS Foundation Trust**

**First recruit for UCLH – well done team!**

PI Mr George Attilakos, Research MWs Cristina Modolo, Sarah Weist, Anna Riera Viader, and Vanessa Greening, Clinical Res Manager Yaa Acheampong and Research Assistant Justin Willenborg, not forgetting all the Investigators – Dr Lyndsay Creswell, Dr Matias Viera and Dr Ruwan Wimalasundera.



**A big thank you to all sites** for your ongoing hard work on STOPPIT-3 and STOPPIT-M - **we know a lot of work goes on in the background!**



## STOPPIT-3 NEWS

### NEW SITE OPEN!

A **huge welcome** to **Royal Victoria Infirmary, Newcastle** which opened on the 20th June 2024!

Welcome to the team:

PI Dr Alex Patience, Research Midwives Diana Zuzzolo, Sally Wood, Jade Deighton and Falak Diab, Associate PI Dr Emily Frier, Investigator Dr Philippa Marsden and their wonderful Study Co-ordinator Angela Phillipson and Research Project Manager Marc Davies.



### REMINDERS!

A gentle reminder to please **submit Deviation Logs and Violation Logs** to the trial team for the **second quarter of 2024!**

STOPPIT-M

£100

SITE RECRUITMENT REWARD  
FOR EVERY STOPPIT-M  
RECRUIT IN **MAY,**  
**JUNE & JULY**

MAY, JUNE & JULY

Also remember that **EVERY STOPPIT-M** recruit in **July** is eligible for a **£100 recruitment reward!**

For more details email the trial team!

[STOPPIT.Trial@ed.ac.uk](mailto:STOPPIT.Trial@ed.ac.uk)



### UPCOMING TEAMS CALLS

The **drop-in chats** are guided by the needs of the STOPPIT-3 research teams and offer a **good opportunity** to discuss any issues you may be having or ask for advice or insights from other sites. In comparison, the **monthly PI Chats** are **aimed at supporting PIs** but are open to **all STOPPIT-3 site team members**.

- **PI drop-in chat Tuesday, 11th July at 16:30hrs** – aimed at PIs, but everyone welcome.
- **Drop-in chat is Thursday, 27th July at 13:00hrs**– all welcome.

**STOPPIT-3 RECRUITMENT**

<b>Recruiting Team</b>	<b>Total Recruits</b>	<b>June Recruits</b>
<b>NHS Lothian, Edinburgh Royal Infirmary &amp; St John's Hospital Livingston</b>	<b>18</b>	<b>1</b>
<b>Bradford Teaching Hospitals NHS Foundation Trust, Bradford Royal Infirmary</b>	<b>10</b>	<b>1</b>
<b>Pinderfields Hospital, The Mid Yorkshire Trust</b>	<b>8</b>	<b>1</b>
<b>Sunderland Royal Hospital, South Tyneside &amp; Sunderland NHS Foundation Trust</b>	<b>7</b>	<b>1</b>
<b>The James Cook University Hospital, South Tees NHS Foundation Trust</b>	<b>7</b>	<b>1</b>
<b>Somerset Foundation Trust, Musgrove Park Hospital, Taunton</b>	<b>4</b>	
<b>Ninewells Hospital, Dundee</b>	<b>4</b>	<b>1</b>
<b>Cardiff University Hospital</b>	<b>3</b>	
<b>Liverpool Women's Hospital NHS Foundation Trust</b>	<b>2</b>	
<b>Royal Bolton Hospital, Bolton</b>	<b>2</b>	
<b>St Michael's Hospital, University Hospitals Bristol NHS Foundation Trust</b>	<b>2</b>	

**See next page for further recruitment figures**

<b>Recruiting Team</b> (continued)	<b>Total Recruits</b>	<b>June Recruits</b>
<b>Royal Devon &amp; Exeter Hospital, Royal Devon University Healthcare NHS FT</b>	2	1
<b>Birmingham Heartland's Hospital</b>	1	
<b>Chesterfield Royal Hospital NHS Foundation Trust</b>	1	
<b>Northwick Park Hospital, London North West University Healthcare NHS Trust</b>	1	
<b>Queen Elizabeth University Hospital, Glasgow</b>	1	
<b>St George's University Hospitals NHS Foundation Trust, London</b>	1	
<b>University College London Hospitals, NHS Foundation Trust</b>	1	
<b>Wansbeck at North Tyneside General Hospital, Northumbria Healthcare NHS FT</b>	1	
<b>Wishaw General Hospital, NHS Lanarkshire</b>	1	
<b>Total</b>		<b>8</b>

## RECRUITMENT AID

The Recruitment Aid is still available by following the QR code to the right or link below:

<https://edin.ac/3QZthv3>

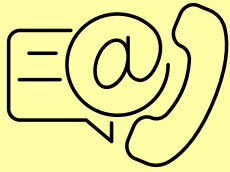


## STOPPIT-3 and STOPPIT-M Sites

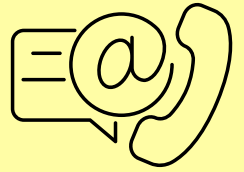
<b>Birmingham Heartland's Hospital</b>	<b>Princess Royal Maternity Hospital &amp; Queen Elizabeth University Hospital, NHS Greater Glasgow &amp; Clyde</b>
<b>Bradford Teaching Hospitals NHS Foundation Trust, Bradford Royal Infirmary</b>	<b>Royal Bolton Hospital, Bolton</b>
<b>Cardiff University Hospital</b>	<b>Royal Devon University Healthcare NHS FT, Royal Devon &amp; Exeter Hospital</b>
<b>Chesterfield Royal Hospital NHS Foundation Trust</b>	<b>Royal Victoria Infirmary, The Newcastle upon Tyne Hospitals, NHS Foundation Trust</b>
<b>East Lancashire NHS Trust, Royal Blackburn and Burnley Hospitals</b>	<b>Somerset Foundation Trust, Musgrove Park Hospital, Taunton</b>
<b>Edinburgh Royal Infirmary &amp; St John's Hospital Livingstone, NHS Lothian</b>	<b>South Tyneside &amp; Sunderland NHS FT, Sunderland Royal Hospital</b>
<b>Grimsby and Scunthorpe, North Lincolnshire &amp; Goole NHS Foundation Trust</b>	<b>St George's Hospital, London</b>
<b>Guy's and St Thomas's, NHS Foundation Trust</b>	<b>St Michael's Hospital, Bristol</b>
<b>John Radcliffe Hospital, Oxford University Hospitals, NHS Foundation Trust</b>	<b>The James Cook University Hospital, South Tees NHS Foundation Trust</b>
<b>Leeds St James' Hospital, Leeds, NHS Trust</b>	<b>The Royal London Hospital &amp; Whipps Cross Hospital, Barts Health NHS Trust</b>
<b>Liverpool Women's Hospital</b>	<b>University College London Hospitals, NHS Foundation Trust</b>
<b>Ninewells Hospital, Dundee</b>	<b>University Hospitals Coventry and Warwickshire NHS Trust</b>
<b>North Tyneside General Hospital &amp; Wansbeck General Hospital, Northumbria Healthcare NHS FT</b>	<b>University Hospitals of Leicester, NHS Trust</b>
<b>Northwick Park Hospital, London North West University Healthcare NHS Trust</b>	<b>University Hospital Wishaw, NHS Lanarkshire</b>
<b>Pinderfields Hospital, The Mid Yorkshire Trust</b>	



July 2024



## CONTACT THE EDINBURGH TRIAL TEAM:



- **Denise Cranley**  
Trial Manager  
Denise.Cranley@ed.ac.uk

- **Amy Nugent**  
Assistant Trial Manager  
Amy.Nugent@ed.ac.uk

- **Cathy Arkwright**  
Trial Management Support Officer  
cathy.arkwright@ed.ac.uk

- **Lorraine Adamson**  
Administrator  
L.D.Adamson@ed.ac.uk

- **Office Telephone**  
0131-651-9925 (direct)

- **Trial email**  
STOPPIT.Trial@ed.ac.uk

- **Social Media**  
 @Stoppit3Study

