



STOPPIT-3 & STOPPIT-M NEWSLETTER

January 2025

WELCOME 2025

Happy New Year and **Welcome** to **2025**, hard to believe this century is already a quarter through its lifespan!

We hope to get the opportunity to work with you on other research studies during the next quarter!

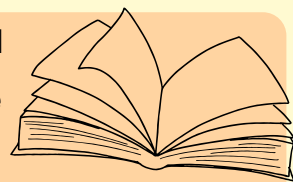
As you know, the **main focus** for **STOPPIT-3** and **STOPPIT-M** this year will be on **closeouts** - see below for important information regarding this.

The **non-recruiting sites** will be **closed out over the next few weeks** (highlighted in grey on page 3) and the Trial Management Team will be in touch with you about this. The **sites with recruits** will be **partially closed** to allow for interim analysis of the data and the PARCA-R questionnaire follow-ups. Again, the **Trial Management Team will be in touch about this**.



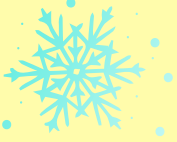
We'll also be in touch to **request invoices, deviations, AE/SAE reports etc** (all the good stuff involved in a clinical trial). Not receiving these can often lead to long delays when closing a site so it is important we get these up to date.

There will be a **protocol amendment** to include all the changes to the trial for both STOPPIT-3 and STOPPIT-M. This will be put through and circulated as soon as possible.



Screening log: If your site had eligible women to add to the log when recruitment stopped please do update this for us. Please include women who were ≥ 32 weeks with planned birth dates and who received the long PIS. Add to the log as 'other' noting 'trial closed early'. This will really help us gain understanding of women eligible for the trial.

Please don't hesitate to contact the trial team if you have any queries about either STOPPIT-3 or STOPPIT-M.

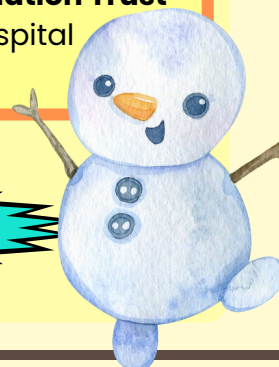


STOPPIT-3 and STOPPIT-M Sites

Sites to close fully in grey

<p>Bolton NHS Foundation Trust Royal Bolton Hospital</p>	<p>NHS Lanarkshire University Hospital Wishaw</p>
<p>Bradford Teaching Hospitals NHS Foundation Trust Bradford Royal Infirmary</p>	<p>NHS Lothian Royal Infirmary of Edinburgh (SCRH) St John's Hospital, Livingston</p>
<p>Cardiff & Vale University Health Board University Hospital of Wales, Cardiff</p>	<p>NHS Tayside Ninewells Hospital, Dundee</p>
<p>East Lancashire Hospitals NHS Trust Burnley General Teaching Hospital Royal Blackburn Teaching Hospital</p>	<p>Northern Lincolnshire and Goole NHS Foundation Trust Diana, Princess of Wales Hospital, Grimsby</p>
<p>Leeds Teaching Hospitals NHS Trust St James's University Hospital</p>	<p>Northumbria Healthcare NHS Foundation Trust Wansbeck General Hospital</p>
<p>Liverpool Womens NHS Foundation Trust Liverpool Women's Hospital</p>	<p>Oxford University Hospitals NHS Foundation Trust John Radcliffe Hospital</p>
<p>London North West University Healthcare NHS Trust Northwick Park Hospital</p>	<p>Royal Devon University Healthcare NHS Foundation Trust Royal Devon & Exeter Hospital</p>
<p>Mid Yorkshire Teaching NHS Trust Pinderfields Hospital</p>	<p>Somerset NHS Foundation Trust Musgrove Park Hospital</p>
<p>NHS Greater Glasgow & Clyde Princess Royal Maternity Hospital Queen Elizabeth University Hospital</p>	<p>South Tees Hospitals NHS Foundation Trust James Cook University Hospital</p>

See next page for more STOPPIT-3 sites!



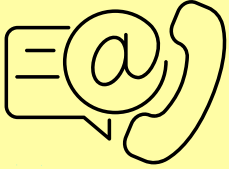
STOPPIT-3 and STOPPIT-M Sites continued



Sites to close fully in grey

<p>South Tyneside & Sunderland NHS Foundation Trust Sunderland Royal Hospital</p>	<p>Guy's and St Thomas' NHS Foundation Trust St Thomas' Hospital</p>
<p>St George's University Hospitals NHS Foundation Trust St George's Hospital, London</p>	<p>Manchester University NHS Foundation Trust St Mary's Hospital, Oxford Road St Mary's Hospital, Wythenshawe</p>
<p>University College London Hospitals University College Hospital, London (UCLH)</p>	<p>Newcastle Hospitals NHS Foundation Trust Royal Victoria Infirmary</p>
<p>University Hospitals Birmingham NHS Foundation Trust Birmingham Heartlands</p>	<p>Norfolk and Norwich University Hospitals NHS Foundation Trust Norfolk and Norwich University Hospital</p>
<p>University Hospitals Bristol NHS Foundation Trust St Michael's Hospital, Bristol</p>	<p>Northern Lincolnshire and Goole NHS Foundation Trust Scunthorpe General Hospital</p>
<p>Barts Health NHS Trust Royal London Hospital</p>	<p>Northumbria Healthcare NHS Foundation Trust North Tyneside General Hospital</p>
<p>Birmingham Women's and Children's NHS Foundation Trust Birmingham Women's Hospital</p>	<p>The Dudley Group NHS Foundation Trust Russels Hall Hospital</p>
<p>Chesterfield Royal Hospital NHS Foundation Trust Chesterfield Royal Hospital</p>	<p>University Hospitals Coventry & Warwickshire University Hospital, Coventry</p>
<p>Croydon Health Services NHS Trust Croydon University Hospital</p>	<p>University Hospitals of Leicester NHS Trust Leicester Royal Infirmary</p>



**CONTACT THE EDINBURGH TRIAL TEAM:**

- **Denise Cranley**
Trial Manager
Denise.Cranley@ed.ac.uk
- **Amy Nugent**
Assistant Trial Manager
Amy.Nugent@ed.ac.uk
- **Cathy Arkwright**
Trial Management Support Officer
cathy.arkwright@ed.ac.uk
- **Lorraine Adamson**
Administrator
L.D.Adamson@ed.ac.uk
- **Office Telephone**
0131-651-9925
(direct)
- **Trial email**
STOPPIT.Trial@ed.ac.uk
- **Social Media**
X @Stoppit3Study



**FOLLOW US
ON SOCIAL MEDIA:**

@Stoppit3Study